



WELCOME TO ROSSINGTON ALL SAINTS ACADEMY



Leading Parent
Partnership Award

6 Key Areas in School

- Success Culture – Examination Results
- High quality care, guidance and support.
- State of the art learning environment.
- Small school – every child matters.
- Extensive extra curricular provision.
- Forward thinking & innovative academy.

“


OFSTED said

Students make good progress and the schools curriculum is ambitious and well thought through.

‘Leaders are highly aspirational for pupils.’


Oftsed Inspection

We are Proud of our students and our academy



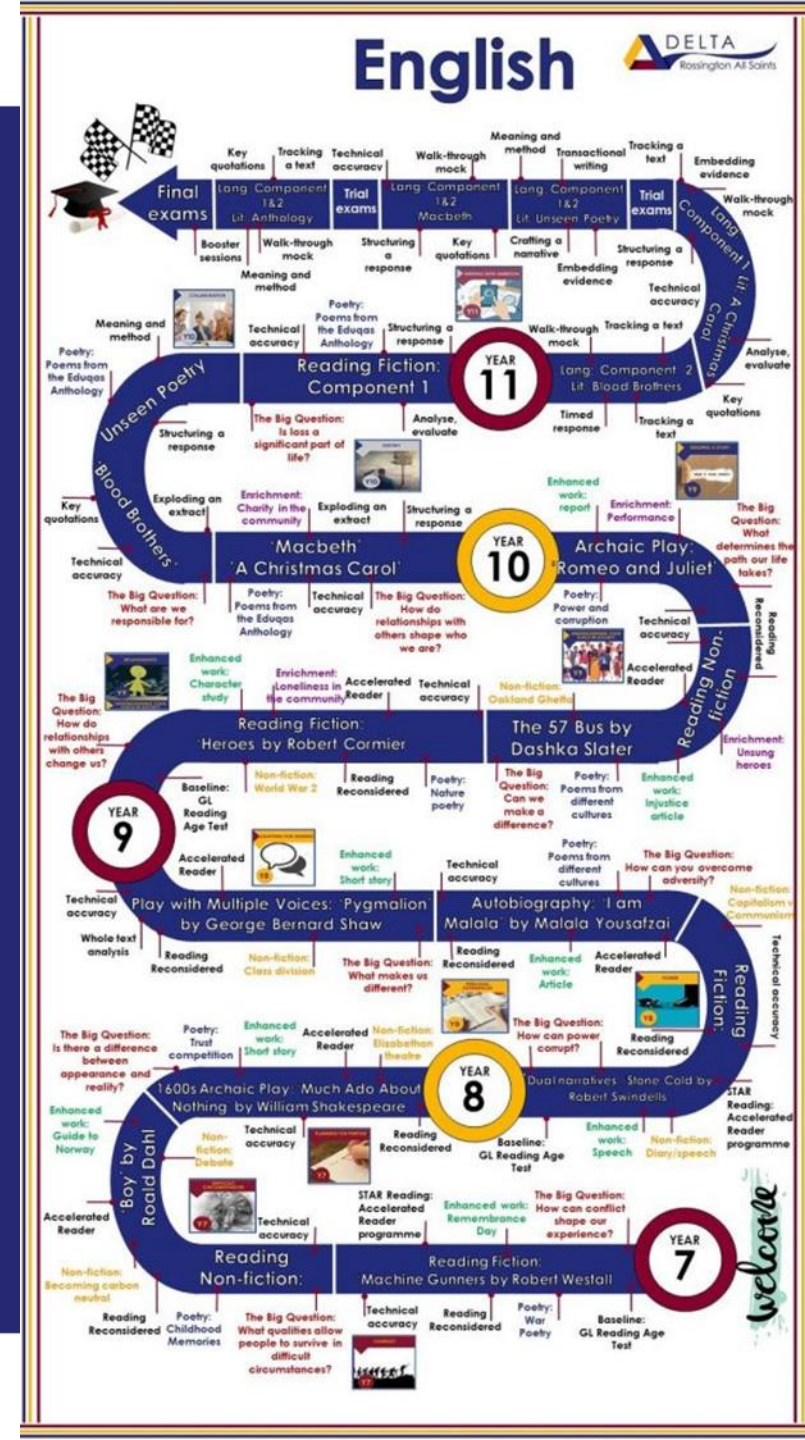
GCSE Results

- 75% achieved grade 4 or above in Maths and English combined
- 76% achieved grade 4 or above in Maths
- 90% achieved grade 4 or above in English

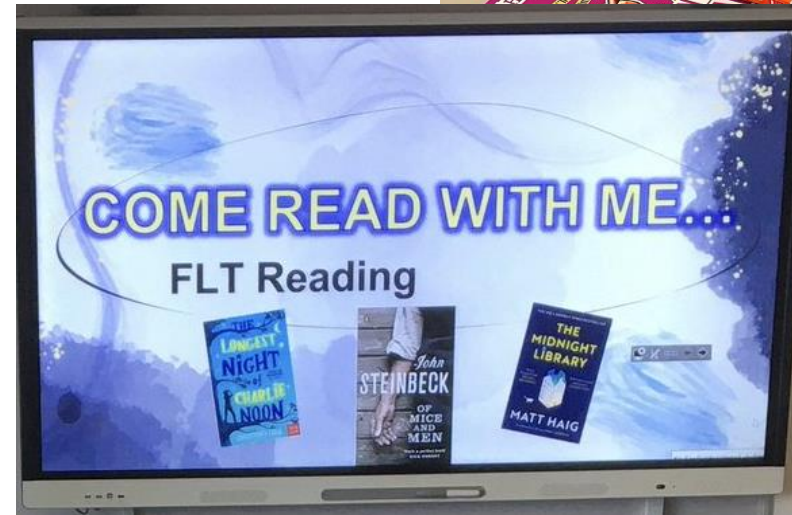
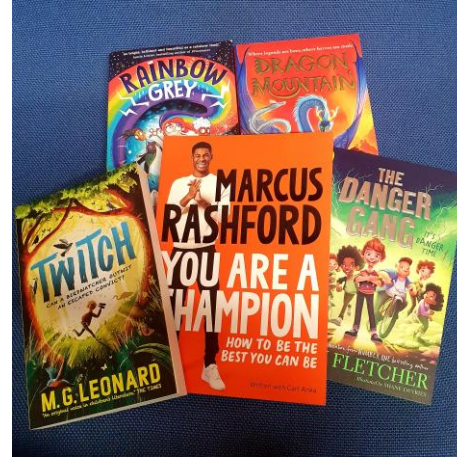
 DELTA
Rossington All Saints

#Proud #DeltaFamily #ChangingLives

Broad and Balanced
Detailed Plans
Learning Journey
Well resourced



Reading for pleasure



Reading Routes



Reading Routes Delta



You have been successful in improving pupils' progress by making sure that each pupil receives targeted support which is centred on their needs.

Ofsted

Knowledge Organiser

Every student is issued with a Knowledge Organiser and Retrieval book each term.

20 minutes a day of retrieval practice.

Students will also be quizzed on key aspects of their knowledge organiser in lessons and around the academy.

Teachers may specify certain parts to learn at particular times and may set additional home learning tasks to go along side this.

“

You have been successful in improving pupils' progress by making sure that each pupil receives targeted support which is centred on their needs.

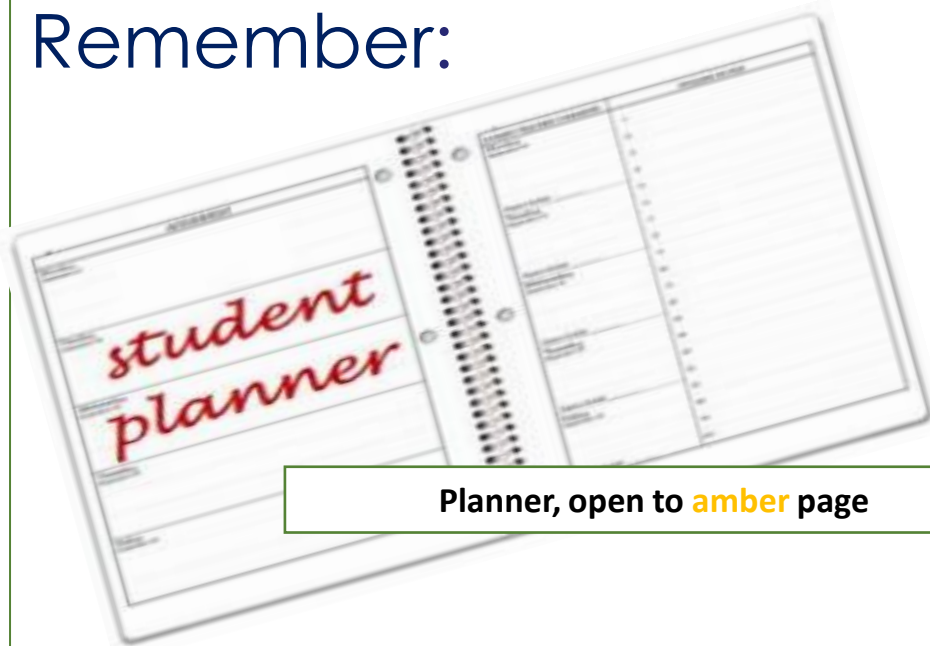
Ofsted

Get ready for learning!

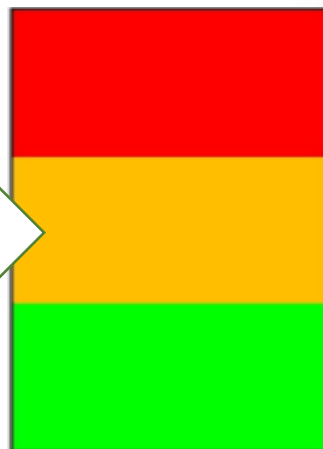
Remember:

Pen, pencil, ruler and **red** pen

Be **RASA**
Proud



Planner, open to **amber** page



Stand behind your chair, quietly



#RASAPROUD

#ProudThursday

Subject: **HISTORY**



I nominate Rihanna S (Y9) for fantastic extra curricular work done to support her in our WW1 topic! Well done!



Shoutout from:
Mr Jackson



**RASA is positioned
in the top 100
schools in the
country**

Learning Environment

A dedicated team of staff working within a state of the art facility.

- IT and Computing Equipment
- Additional classrooms - Language's corridor
- Sports Facilities
- Academy displays
- Performing Arts

“

“Adults give generously of their time both within the school day and well beyond it to ensure the academy's standards continue to rise rapidly; this 'going the extra mile' enables students to make good academic progress.”

SIAMS Inspection

Pastoral Care

High quality care, guidance and support is provided to all students which is a result of our approach to teaching & learning and values promoted through the academy



“

Leaders know pupils and their families very well, which results in pupils feeling safe and happy at the school. Pupils are confident that staff will deal effectively with any problems they might have

Ofsted

The blue line

- Uniform expectations:
 - (shirts/skirts/jewellery/make up/nails).
- Equipment expectations including planner and devices.
- No chewing gum, fizzy drinks, share bags of sweets/biscuits.
- Students go straight to their first lesson classroom immediately after entry into school – supervision by teachers to start from 8:10am.



Attendance

Being in school at least 97% of the time = 185-190 days a year.

There are 365 days in a year and 190 days in a school year.

There are 175 days for holidays, shopping, birthday celebrations and non-urgent appointments.

| | | | | |
|-----------------------------------|-----------------------|-----------------------|---|-----------------------|
| 190 days in school | 5 days absent | 10 days absence | 15 days absence | 19 days of absence |
| | 185 days of school | 180 days of school | 175 days of school | 171 days of school |
| 100% attendance | 97% attendance | 95% attendance | 92% attendance | 90% attendance |
| The best chance of success | | Worrying. | Serious concern of not making progress or achieving. | |

Punctuality

- All students should arrive on site between 8:10am and 8:20am
- The first lesson begins at 8:25am
- **C4 Other if late to school (the same evening)**

Movement around the academy

- Students should move through corridors sensibly.
- The bottom corridor (reprographics, bridge/PLC etc) is not to be used by students as a corridor, students should be escorted by staff.



In Lessons

- 6 Part lesson starting with YKTD displayed for students to complete.
- High expectations.
- No negotiating.
- Consistent use of conduct board.



Personal Development and Enrichment

- An extensive enrichment program is offered covering areas such as STEM, Music, Performing Arts, photography, Dungeons & Dragons, reading, homework, languages, life skills and Sport.
- A wide variety of educational trips and visits are planned to supporting learning within the classroom.
- Wide-ranging Personal development programme (Careers, British Values, Christian Ethos and Character Development)

“

“The Christian character of the school clearly underpins the spiritual, moral, social and cultural learning of the school”

SIAMS



“

“The Christian character of the school clearly underpins the spiritual, moral, social and cultural learning of the school”

SIAMS

Enrichment



Trips Visits and Enrichment

“



Personal Development and Enrichment

Cleethorpes

Yorkshire Wildlife Park

Duke of Edinburgh

Sports Day

Hornsea

Brilliant Club – Leeds University

Sheffield Hallam – Aspirations

Royal Armouries – History Trip

Scarborough – Life Skills

Blood Brothers - Theatre Visit

Manchester City – Etihad



Pledges

1. Enrichment.

Regular attendance of an "After Academy" club or activity.

2. Represent the Academy.

Represent the Academy at a sporting, cultural or academic event.

3. Residential.

Take part in a residential experience.

4. Attend a National Event.

Attend a national sporting or cultural event or performance at a major venue.

5. Academic Event.

Take part in an event at

6. Formal Presentation.

Take part in a formal presentation to an audience using ICT/multi-media.

7. Leadership.

Take the lead on a project. This could be in class, in the wider school or in your own time.

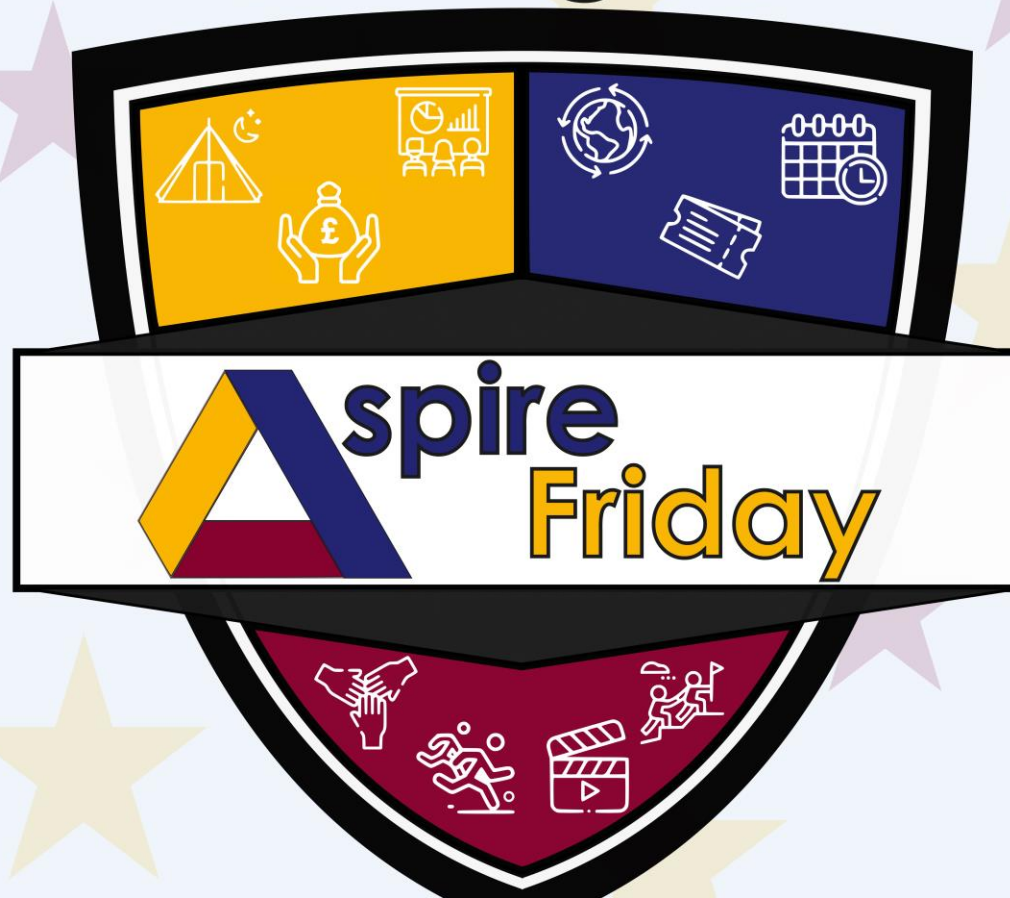
8. Community Experience.

Be actively involved in some form of community experience, within or beyond the academy.

9. Fundraising.

Help plan, organise or participate in a fundraising event within the Academy or wider community.

10. Sustainability.



Pledges

School isn't just about exams

Pledges help you to develop as a person and allow you to gain a rounded experience in and out of the academy



Every Child Matters

- Smaller than average school.
- tutor groups and class sizes allow a personalised approach to support and learning.
- Individual students well known and this allows their needs to be well catered for by staff.
- The academy fosters a sense of belonging to the students; we are in it together!



Forward Thinking

Our passion to ensure all students succeed drives us in ensuring learning is accessible and relevant to students.

We aren't complacent and we're always exploring for new innovative approaches.

We work with our family of academies within Delta Academies Trust to share and promote the best practice.



Rossington All Saints Academy

- Success Culture – Examination Results
- High quality care, guidance and support.
- State of the art learning environment.
- Small school – every child matters.
- Extensive extra curriculum provision.
- Forward thinking & innovative academy.





WELCOME TO ROSSINGTON ALL SAINTS ACADEMY



Leading Parent
Partnership Award



Thank you for listening